

The new fire brigade - Backflow preventer BA „F1“

Current technique



Backflow preventer BA „F1“ pillar hydrant

For years Luitpold Schott has equipped the drink water standpipes with a backflow preventer BA.

We expanded our product range of „Backflow preventer“ for the firefighting operation.

The BA “F1” meet the requirements of the Backflow preventer BA and it also takes the requirements of the EN1717 for the extraction of extinguishing water from the drinking water network.



Backflow preventer BA Typ „F1“

Advantages of the Backflow preventer BA TYP „F1“

- **Storz Lug 089 coupling Aluminum**
- **Short overall length**
- **Low weight**
- **High flow rate**

Do you have any questions?

We can advise you about our products. You can call us or send us an email.

**Luitpold Schott
 Armaturenfabrik GmbH**

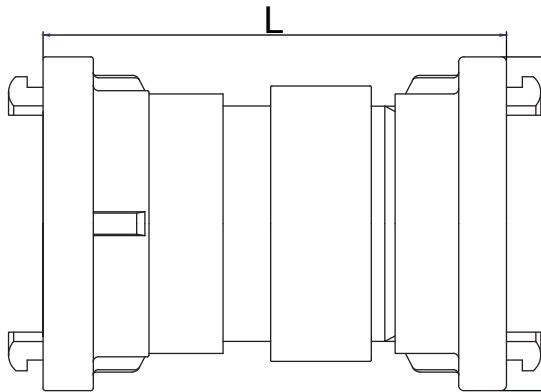
Brunckstraße 18
 D-67346 Speyer

Fon +49 6232 6459 0
 Fax +49 6232 6459 30

info@luitpoldschott.com
 www.luitpoldschott.com

*Backflow preventer ensure up to categories of endangerment number 4 in accordance with EN1717

Backflow preventer BA „F1“



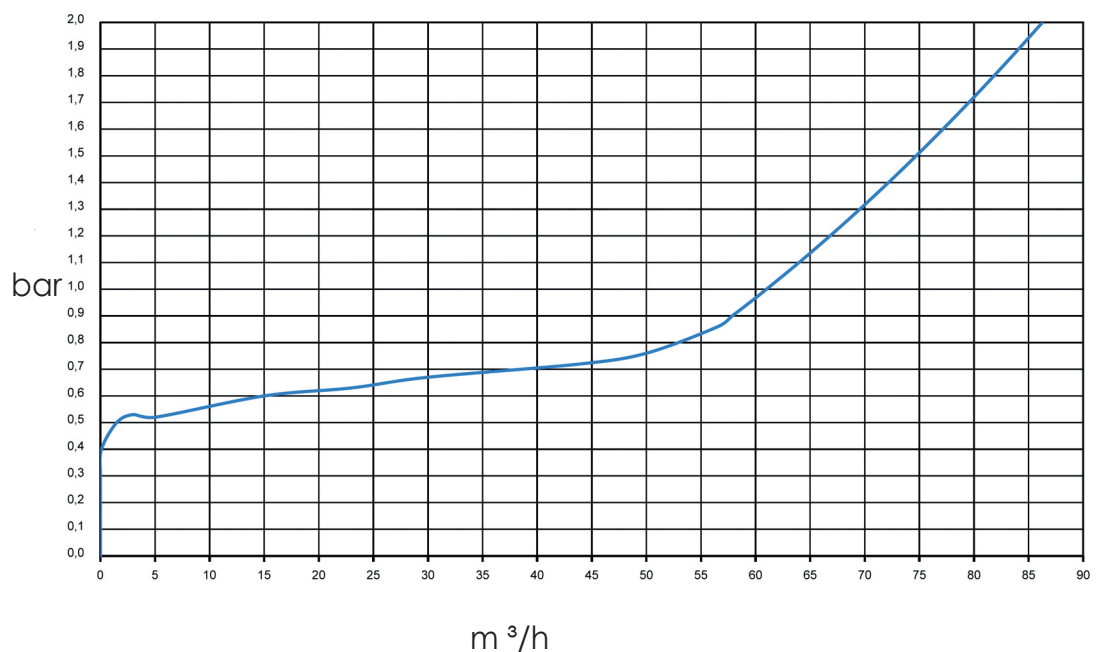
Advantages overview :

- Low pressure loss
- Nominal pressure PN 16
- Pressure surge dampening
- Compact shape
- Low weight
- Automatic hose dumping function
- Easy construction
- Safe handling

The new **Backflow Preventer BA F1** fulfills the additional conditions, and thus not only the security function of a Backflow Preventer BA but also the special requirements of the fire brigade.

This Backflow Preventer thus represents the state of the art for the extraction of fire-fighting water from the drinking water supply.

Flow characteristic



Do you have any questions?

We can advise you about our products. You can call us or send us an email.

Luitpold Schott
Armaturenfabrik GmbH

Brunckstraße 18
D-67346 Speyer

Fon +49 6232 6459 0
Fax +49 6232 6459 30

info@luitpoldschott.com
www.luitpoldschott.com

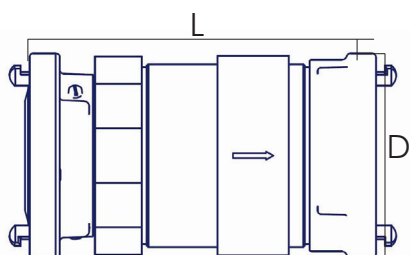
The fire brigade backflow preventer B-FW "F2"
 fulfills the specific requirements of the fire department



The backflow preventer B-FW Type "F2" for the fire brigade according to DIN 14346 with a flow rate of 2050 l/min with a pressure drop below 1 bar. B-FW Type "F2" according to DIN 14346 with a flow rate of 2050 l/min with a pressure drop below 1 bar



B-FW Type "F2" on the overground hydrant



Weight : 4,16 Kg

- Low pressure loss
- Nominal pressure PN 16
- Water hammer damping
- Compact form
- Lightweight
- Automatic hose emptying function
- Easy assembly
- Secure handling
- With handle

Technical data - dimensions						
Type	Nominal size	Connection	Nominal pressure	Flow	Overall length (L)	Diameter (D))
	DN	Coupling	PN	l/min Δp 1,0 bar	mm	mm
B-FW	80	Storz B	16	2050 l/min	235	136

Do you have any questions?

We can advise you about our products. You can call us or send us an email.

Luitpold Schott
Armaturenfabrik GmbH

Brunckstraße 18
 D-67346 Speyer

Fon +49 6232 6459 0
 Fax +49 6232 6459 30

info@luitpoldschott.com
 www.luitpoldschott.com

Clarity with regard to securing water for firefighting!

With **DIN 14346** the mobile backflow preventer **B-FW** and its characteristics are clearly defined.

This norm is valid for the application according to the regulation for water for human use (Drinking water supply – TrinkwV2001, in conjunction with the DVGW (German Technical and Scientific Association for Gas and Water) worksheets W400, W 405-B1 and W408 as well as the DIN EN 805 for the fire brigades in the field of application and training).



Requirements of the B-FW Type “F2”

The core requirement for a backflow preventer of the family “B” is the ability to maintain a pressure drop of at least 0.14 bar (1.4 mWS) at the input side of the backflow preventer under all operational conditions in order to prevent a flow reversal. Any variant in the system separator family “B” must, without exception, fulfill this condition.

The backflow preventer **B-FW Type “F2”** was designed based on DIN 14346. The flow value of 2050 l/min corresponds with the required 1600 l/min. Both outlets are fitted with Storz B -75 (Lug spacing 089 mm) 3“. The coupling which is fastened to the standpipe can be turned. Furthermore, the backflow preventer B-FW „F2“ has a handle.

We at Luitpold Schott stand for innovation and with the backflow preventer “F1” we are forerunners in fire brigade backflow preventer. This enabled us, after feedback from our clients, to optimise the backflow preventer “F1”. In the end we could incorporate these experiences during the development of the B-FW Type “F2”.

Have you got any queries regarding backflow preventer? Just give us a call or write us an email.

Do you have any questions?

We can advise you about our products. You can call us or send us an email.

Luitpold Schott
Armaturenfabrik GmbH

Brunckstraße 18
D-67346 Speyer

Fon +49 6232 6459 0
Fax +49 6232 6459 30

info@luitpoldschott.com
www.luitpoldschott.com

Hose washing attachment up to 125 mm

Our new hose washing attachment allows you to quickly and thoroughly clean flat hoses up to 125 mm.

The nozzles in the hose washing attachment are arranged in a ring, pushing the hose to be cleaned through the device by means of water pressure. This is how the cleaning process takes place. The inner pipe is made of stainless steel, while the other components are made of aluminium. The hose washing attachment can be connected to standpipes, above-ground hydrants or pumps. In this case, the coupling requested by the customer is mounted on the connection.



hose washing attachment with Storz C

The hose washing attachment has a weight of approx. 10.5 kg and can be easily transported using the carrying handle.

Connection	Material	Remarks	Order-No.
2"AG male BSP thread	Alu SST	with filter	10026A
Storz 38 KA Lug 052	Alu SST	with filter	10068A
Storz C-52 KA Lug 066	Alu SST	with filter	10069A
Storz 65 KA Lug 081	Alu SST	with filter	10070A
Storz B-75 KA Lug 089	Alu SST	with filter	10071A
BS 2½"male	Alu SST	with filter	10072A

Do you have any questions?

We can advise you about our products. You can call us or send us an email.

**Luitpold Schott
 Armaturenfabrik GmbH**

Brunckstraße 18
 67346 Speyer

Fon +49 6232 6459 0
 Fax +49 6232 6459 30

info@luitpoldschott.com
 www.luitpoldschott.com

**Test set for torque requirement Storz couplings
 Fire and Rescue NSW 45534 or NEN 3374 or DIN**



Test set

Do your Storz couplings really have the torque requirements?

With our test set for Storz 38 and Storz 65 you can easily verify this. The torque wrench indicates exactly the Nm required for coupling.



LED Display

This ensures that the couplings work even under operating conditions.

Do you have any questions?

We can advise you about our products. You can call us or send us an email.

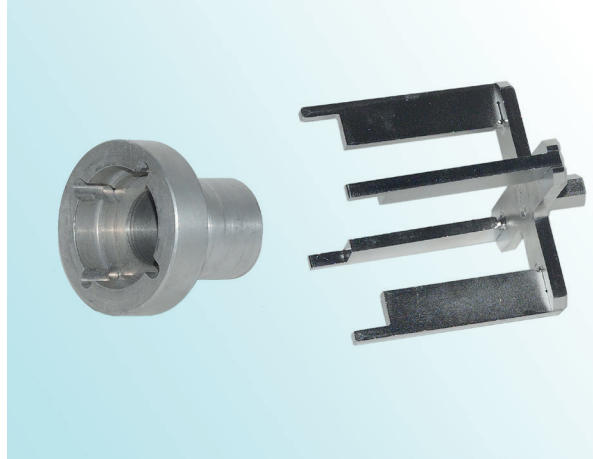
**Luitpold Schott
 Armaturenfabrik GmbH**

Brunckstraße 18
 D-67346 Speyer

Fon +49 6232 6459 0
 Fax +49 6232 6459 30

info@luitpoldschott.com
 www.luitpoldschott.com

**Test set for torque requirement Storz couplings
Fire and Rescue NSW 45534 or NEN 3374 or DIN**



Test adapter for Storz 38 and 65



Test pieces for Storz 38 and 65

Do you have any questions?

We can advise you about our products. You can call us or send us an email.

There are suitable test pieces for the different coupling sizes.

These are equipped with pressure-suction seal or pressure seal, so that all variants can be tested.

Test values in Nm

Seal \ Size	Storz 38	Storz 65
Pressure	3-5 Nm	4-7 Nm
Pressure/Suction	5-8 Nm	6-11 Nm

Luitpold Schott
Armaturenfabrik GmbH

Brunckstraße 18
D-67346 Speyer

Fon +49 6232 6459 0
Fax +49 6232 6459 30

info@luitpoldschott.com
www.luitpoldschott.com